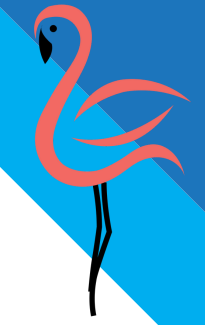


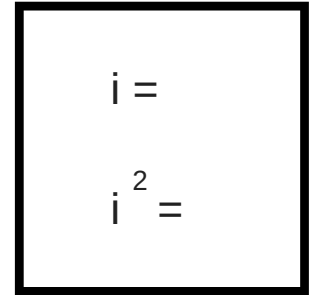
ACT/SAT

Math Vocabulary



Flamingo
TUTORING

- mean
- median
- mode
- range
- isosceles triangle
- scalene triangle
- equilateral triangle
- $y = mx + b$
- slope
- parallel
- perpendicular
- y-intercept
- directly proportional
- indirectly proportional



Flamingo
TUTORING

- area
- perimeter
- volume
- surface area
- area of circle formula
- circumference formula
- arc
- chord
- diameter
- radius
- scatterplot
- line of best fit
- undefined fraction
- absolute value
- on an x-y graph, range is ____,
domain is ____.



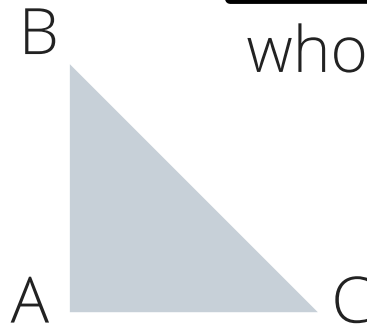
Absolute Value in Equations

$$|3-2|-8= \quad |x-2|=4$$

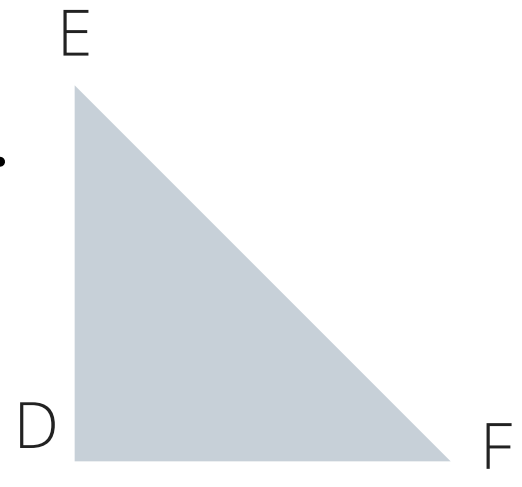
Exponent Rules

Proportions and Probability

want
all options



part
whole



Careful...

$$(x+2)^2 =$$

$$4(x+2) =$$

$$10-4(x+2) =$$

Solve using elimination:

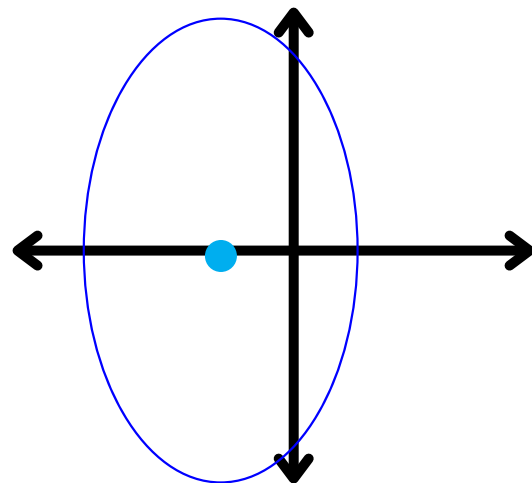
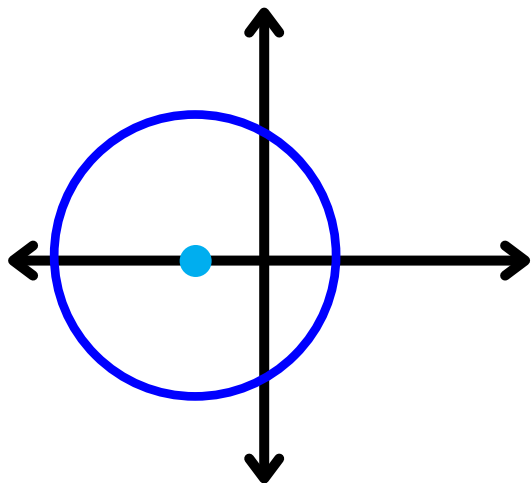
$$x - y = 11$$

$$2x + y = 19$$

$$8x + y = -16$$

$$-3x + y = -5$$

- equation of a circle / ellipse



- quadratic formula

- SOHCAHTOA



- matrices

ACT

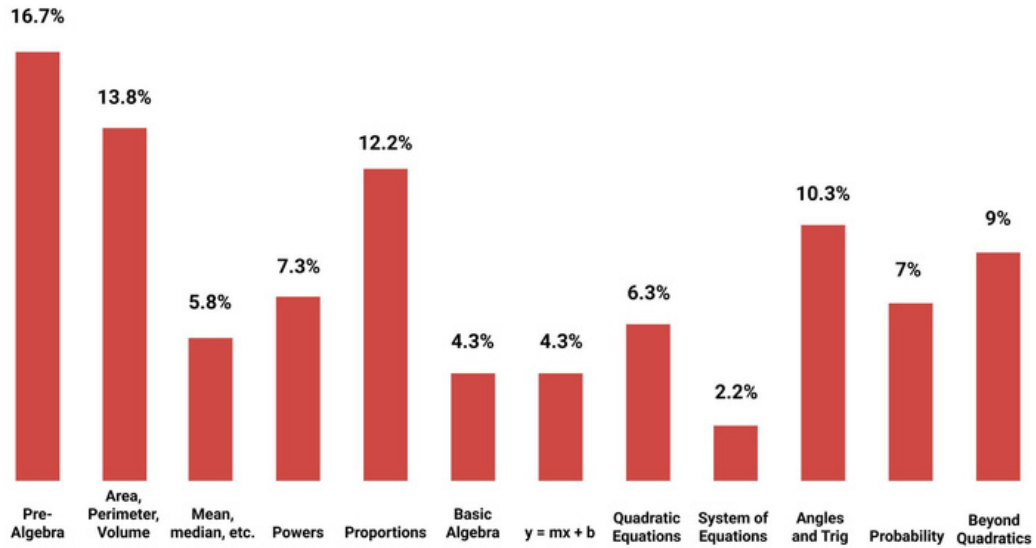
- vectors

SAT

- stem and leaf
- box and whisker



Distribution of Math Question Types On Recent ACTs



Distribution of Math Question Types On Recent SATs

